



## Sophisticated RIP Software maximizes the performance of JFX200 Series

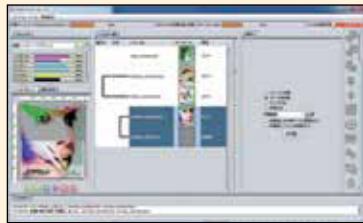
### Intuitive and user-friendly operation



1. Easy to follow icons enable intuitive and user-friendly operation



2. Related settings feature in one window to simplify RIP operations with 'Register as Favourite' option available for regularly used layouts



3. Printing progress can be monitored on the main screen

Web update function is supported: This facility enables easy program updates and profile downloading to be performed via the internet.

### Twin-bed model (2.5m x 3.1m total print area)

## JFX200-2531



PRINTING

### TOGGLE PRINT FEATURE

allows the loading of media on one side of the bed while printing on the other side

### Specifications

Item	JFX200-2513	JFX200-2531
Head	Staggered array of 2 heads	
Print resolution	300, 450, 600, 900, 1,200dpi	
Ink	Type	LH-100 (C, M, Y, K, W, Cl)
		LUS-120 (C, M, Y, K, W, Cl)
		LUS-150 (C, M, Y, K, W)
		LUS-200 (C, M, Y, K, W)
Media	Ink supply system	Supplied from 1-litre bottles for each colour
		White ink circulation system <sup>1</sup>
		White ink circulation system <sup>1</sup>
		White ink circulation system <sup>1</sup>
Maximum media size	Dimensions (WxD)	2,500 x 1,300mm
		2,500 x 3,100mm
		2,500 x 3,100mm (or 2 x 1,220 x 2,440mm panels)
Media absorption	Height	50mm
		50 kg/m <sup>2</sup> non concentrated load
		Absorption fixed through use of a vacuum
Range accuracy	Reproducibility	2 partitions (X-axis direction)
		4 partitions (X-axis direction)
UV device	Standard service life <sup>2</sup>	LED-UV system
		Over 5,000 hours
Interface	Safety standard	USB2.0
		VCCI class A, CE Marking, CB Report, UL (U.S. safety organization), RoHS directive, UL 60950-1, FCC class A
Input power supply	Power consumption	Single phase, 200 V AC-240 V AC, 50Hz/60Hz, up to 15A
		Single-phase AC200-240V 12A or less, 8A or less (Two inlets)
Installation environment	Temperature	Up to 3.6kVA
		2.88 kVA, 1.92 kVA (Total: 4.8 kVA)
Dust	Relative humidity	15°C-30°C
		35%-65% RH
Dimensions (WxDxH)	Accuracy maintained	18°C-25°C
		Up to ±10°C/h
Weight	Dust	Similar to standard office environments
		Similar to standard office environments
Weight	Dimensions (WxDxH)	4,400 x 2,450 x 1,250 mm
		4,400 x 4,290 x 1,250 mm
Weight	Weight	630 kg
		1000 kg

<sup>1</sup> MCT works only with white ink.

<sup>2</sup> The standard service life times listed are estimates and do not guarantee the operation.

### Inks and substrates:

- Please note that properties and adhesion, weather resistance etc, of ink and substrates can vary. Therefore please test materials before printing.
- Some substrates require primer before printing. Please test materials beforehand or ask your sales representative.

### Safety notice:

- You are dealing with UV light sources that may harm your health. Please follow below guidelines strictly:
  - Do not look directly into the UV light source nor place your hand, or expose your skin directly to the UV light source.
  - Depending upon print mode, there might occur some VOC emittance from printed parts not yet cured and hardened
  - In addition, please read the instructions and guidelines of the manual carefully and follow those.

- Some of the samples in this folder are artificial renderings • Specifications, design and dimensions stated in this folder may be subject to change without notice (for technical improvements, etc.)
- The corporate and merchandise names written on this folder are the trademark of the respective corporations • Inkjet printers print using extreme fine dots, so colours may vary after replacement of the printing heads, also note that if using multiple printer units, colours could vary slightly from one unit to other unit due to slight individual differences • Compositor's errors reserved

### Supplies

Item	Colour	Item No.	Remarks
LH-100	Cyan	LH100-C-BA	1,000ml bottle
	Magenta	LH100-M-BA	
	Yellow	LH100-Y-BA	
	Black	LH100-K-BA	
	White	LH100-W-BA	
	Clear	LH100-CL-BA	
LUS-120	Cyan	LUS12-C-BA	
	Magenta	LUS12-M-BA	
	Yellow	LUS12-Y-BA	
	Black	LUS12-K-BA	
	White	LUS12-W-BA	
	Clear	LUS12-CL-BA	
LUS-150	Cyan	LUS15-C-BA	
	Magenta	LUS15-M-BA	
	Yellow	LUS15-Y-BA	
	Black	LUS15-K-BA	
	White	LUS15-W-BA	
	Cyan	LUS20-C-BA	
LUS-200	Magenta	LUS20-M-BA	
	Yellow	LUS20-Y-BA	
	Black	LUS20-K-BA	
	White	LUS20-W-BA	
	Cyan	LUS35-C-BA	
	Magenta	LUS35-M-BA	
LUS-350	Yellow	LUS35-Y-BA	
	Black	LUS35-K-BA	
	White	LUS35-W-BA	
	Clear	LUS35-CL-BA	
	PR-100	PR100-Z-BA	
	PR-200	PR200-Z-BA	
Tungsten replacement needle for ionizer		SPA-0208	4 pcs
Air filter kit		SPA-0209	10 sets

- Ink and inkjet primer are sold in 1 Litre bottles.
- LUS150 inks can be used in combination with LH-100 clear ink.
- The amount of flexibility exhibited by LUS-150 ink may differ depending on the texture of the print media used.
- Try out the ink on a test page before proceeding with a full print job.
- Printing with LH-100 may not allow the full speed capabilities of the printer to be utilized.

### Options

Item	Item No.	Remarks
Ionizer kit (standard on JFX200-2531)	OPT-J0322	Static eliminator kit
Vacuum unit (ø 1mm x 200mm)	OPT-J0217	Single-phase, 200V-240V, 30A, 1.9kW
Optional blower connector kit	OPT-J0348	

- If the vacuum unit that comes supplied with the printer does not have enough suction power, please purchase a different vacuum unit with optional settings.
- The optional blower connector kit (OPT-J0348) sold separately is needed to connect a vacuum unit with optional settings to the JFX200-Series.
- Vacuum units also require their own power supply line separate from that for the printer itself.

## INCREASED PRODUCTIVITY ...

### Toggle Print feature improves performance and productivity

The JFX200-2531 has the facility to set two separate printing origin points on the larger printing area of 2.5m x 3.1m.

The Toggle Print feature allows the loading or unloading of print material on one side of the bed whilst simultaneously printing on the other side of the bed, providing considerable efficiency and productivity benefits.



## Production flatbed LED UV printers...



The world imagines... Mimaki delivers

www.mimakieurope.com info@mimakieurope.com @MimakiEurope

Mimaki Europe B.V. Stammerdijk 7E, 1112 AA Diemen, The Netherlands Tel: +31 (0)20 4627640

MEUJFX2004-E





**Mimaki**

## New expanded high-performance flatbed LED UV printer range

Mimaki's class-leading JFX200 Series of flatbed LED UV printers is expanded with the addition of the JFX 200-2531 to deliver unparalleled performance and productivity for professional sign and graphics companies. A choice of bed sizes and inks, including White and Clear, offers unlimited creative opportunities, with the capability to print to a wide range of substrates. Easy to use and with a compact footprint, the JFX 200 Series maximizes productivity by providing the flexibility to use either one or two industry-standard sized boards, dependent on printer model.

### JFX200 Series delivers ...

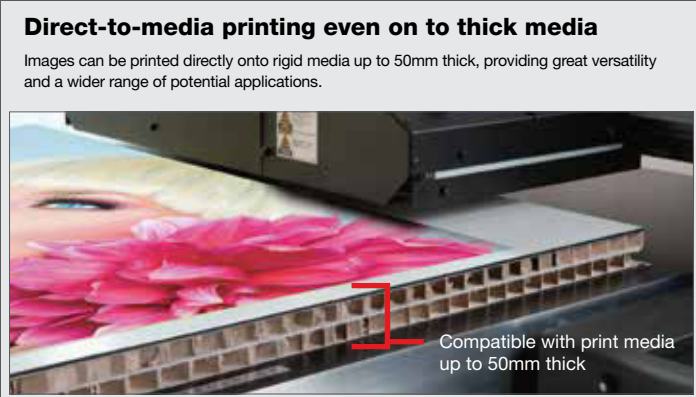
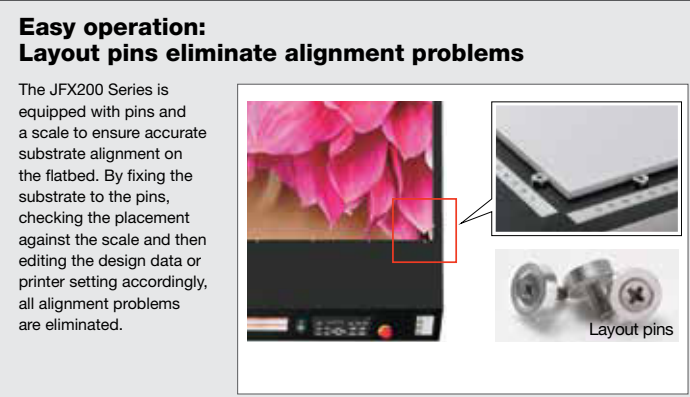
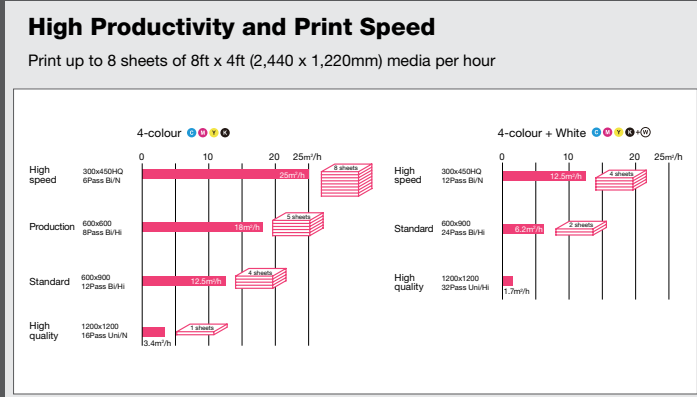
- Highly productive print speeds up to 25m<sup>2</sup>/h and 12.5m<sup>2</sup>/h with simultaneous white ink printing
- Maximum print area of 2.5 x 1.3m (JFX200-2513) / 2.5 x 3.1m (JFX200-2531)
- Toggle Print feature on JFX200-2531 allows simultaneous printing / loading & unloading of media
- Mimaki Advance Pass System reducing banding
- Layout pins simplifying the process of aligning media
- Mimaki Circulation Technology preventing pigment sedimentation of white ink
- Two layer printing with white ink to clear and coloured substrates
- Vacuum unit and high performance Rasterlink RIP software as standard

UV LED CURABLE
25m <sup>2</sup> /h MAX. PRINT SPEED
2,500 x 1,300mm / 2,500 x 3,100mm MAX. PRINT AREA
1,200dpi MAX. RESOLUTION
50mm MAX. MEDIA THICKNESS
FLEXIBLE/HARD INK OPTIONS
UP TO 6 COLOURS + WHITE / PRIMER / CLEAR



**Create ...** Large format Signage & Graphics, including Backlit, Retail PoS, Exhibition graphics, Interior decor panels, creative displays and much more...

### KEY TECHNICAL FEATURES ...



### EXCEPTIONAL PRINT QUALITY ...

